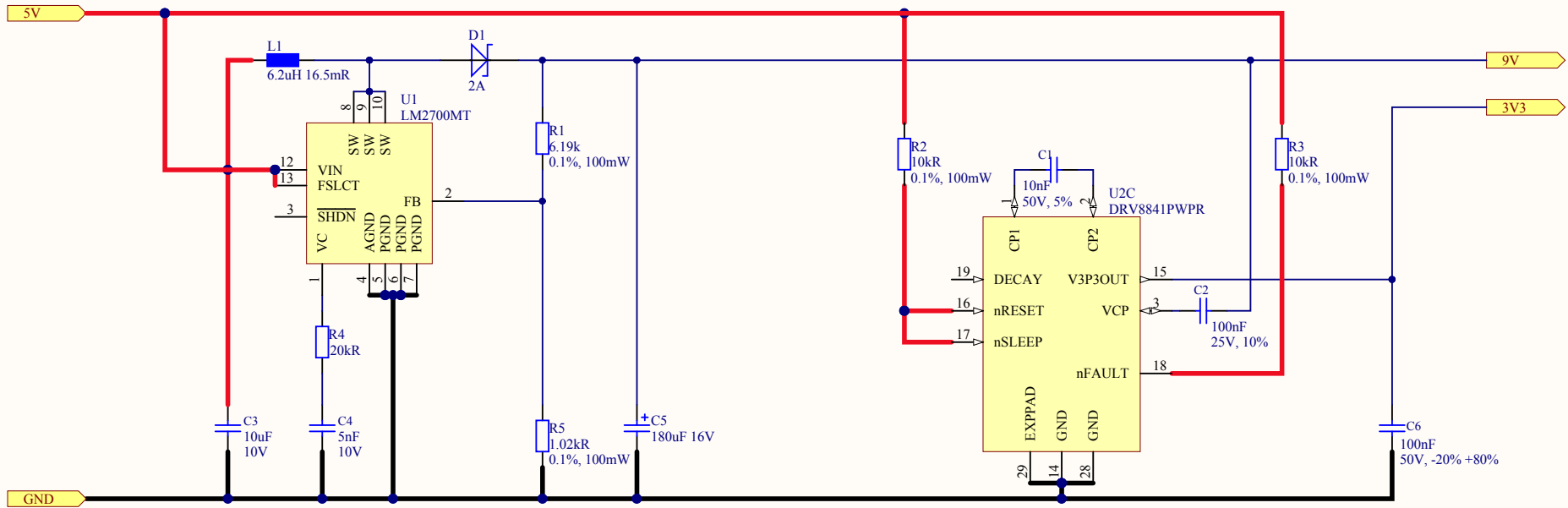


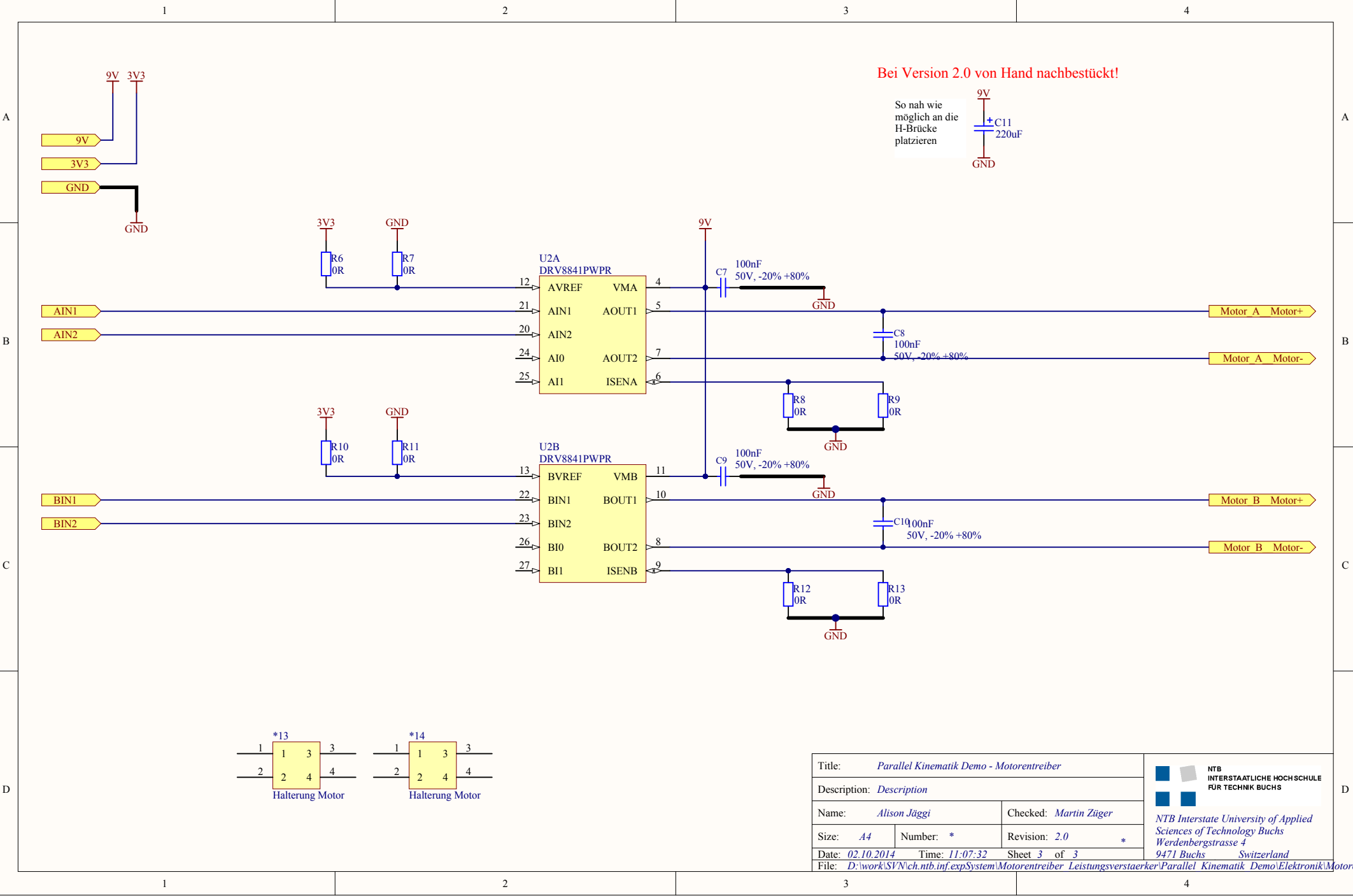
Title: <i>Parallel Kinematik Demo - Hauptschema</i>		 NTB INTERSTAATLICHE HOCHSCHULE FÜR TECHNIK BUCHS
Description: <i>Description</i>		
Name: <i>Alison Jäggi</i>		Checked: <i>Martin Züger</i>
Size: <i>A4</i>	Number: <i>*</i>	Revision: <i>2.0</i>
Date: <i>02.10.2014</i>	Time: <i>11:07:31</i>	Sheet <i>1</i> of <i>3</i>
File: <i>D:\work\SVN\ch.ntb.inf.exp\System\Motorentreiber_Leistungsverstaerker\Parallel_Kinematik_Demo\Elektronik\Haupt</i>		

NTB Interstate University of Applied Sciences of Technology Buchs
 Werdenbergstrasse 4
 9471 Buchs Switzerland



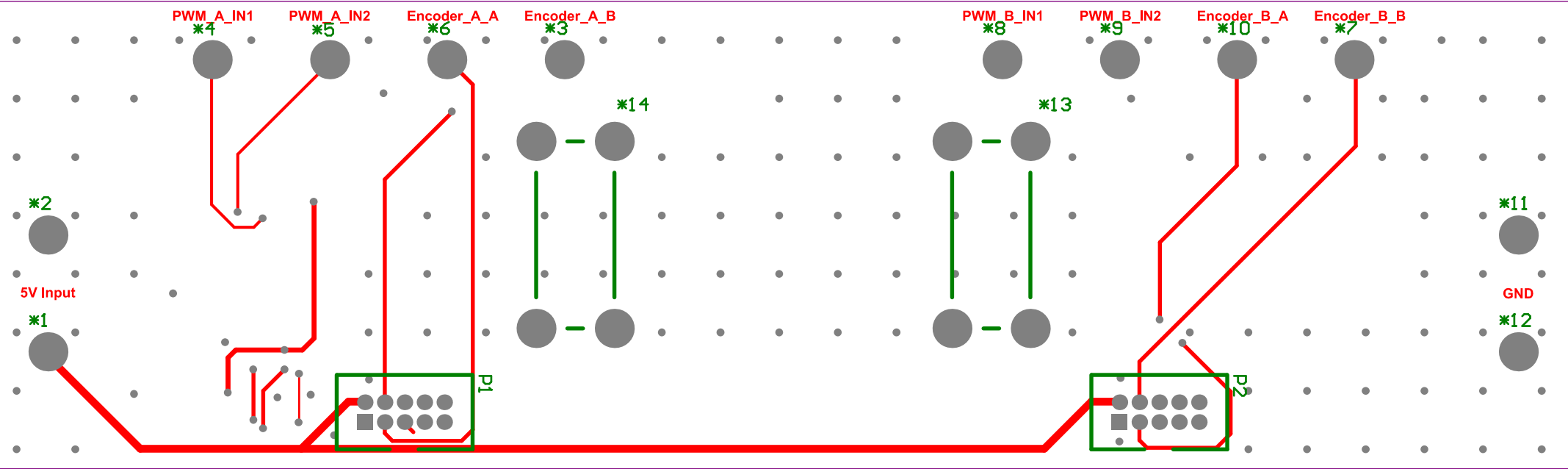
Title: <i>Parallel Kinematik Demo - Versorgung</i>		 NTB INTERSTAATLICHE HOCHSCHULE FÜR TECHNIK BUCHS
Description: <i>Description</i>		
Name: <i>Alison Jäggi</i>		Checked: <i>Martin Züger</i>
Size: <i>A4</i>	Number: <i>*</i>	Revision: <i>2.0</i>
Date: <i>02.10.2014</i>	Time: <i>11:07:32</i>	Sheet 2 of 3
File: <i>D:\work\SVN\ch.ntb.inf.expSystem\Motorentreiber\Leistungsverstaerker\Parallel_Kinematik_Demo\Elektronik\Versorgung</i>		

NTB Interstate University of Applied
Sciences of Technology Buchs
Werdenbergstrasse 4
9471 Buchs Switzerland



Title: <i>Parallel Kinematik Demo - Motorentreiber</i>		
Description: <i>Description</i>		
Name: <i>Alison Jäggi</i>	Checked: <i>Martin Züger</i>	
Size: <i>A4</i>	Number: <i>*</i>	Revision: <i>2.0</i>
Date: <i>02.10.2014</i>	Time: <i>11:07:32</i>	Sheet 3 of 3
File: <i>D:\work\SVN\ch.ntb.inf.exp\System\Motorentreiber_Leistungverstaerker\Parallel_Kinematik_Demo\Elektronik\Motorentreiber</i>		


NTB
 INTERSTAATLICHE HOCHSCHULE
 FÜR TECHNIK BUCHS
 NTB Interstate University of Applied
 Sciences of Technology Buchs
 Werdenbergstrasse 4
 9471 Buchs Switzerland



Encoder_B_B

Encoder_B_A

PWM_B_IN2

PWM_B_IN1

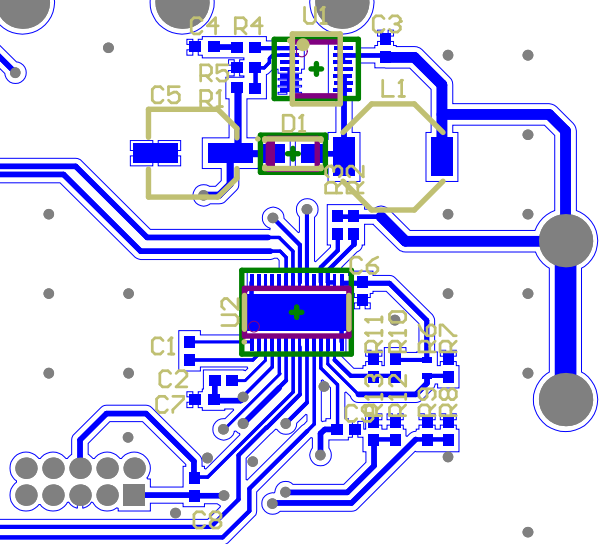
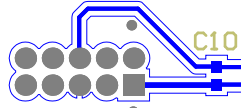
Encoder_A_B

Encoder_A_A

PWM_A_IN2

PWM_A_IN1

Designer: Alex Mullis
Parallel Kinematik Demo
Version: 2.0
Datum: 23.05.2014



Comment	Description	Designator	Footprint	LibRef	Quantity
Input 5V		*1, *2	2mm sleeve	Single Pin Connector	2
Encoder_B		*3, *7	2mm sleeve	Single Pin Connector	2
PWM_A_IN1		*4	2mm sleeve	Single Pin Connector	1
PWM_A_IN2		*5	2mm sleeve	Single Pin Connector	1
Encoder_A		*6, *10	2mm sleeve	Single Pin Connector	2
PWM_B_IN1		*8	2mm sleeve	Single Pin Connector	1
PWM_B_IN2		*9	2mm sleeve	Single Pin Connector	1
GND		*11, *12	2mm sleeve	Single Pin Connector	2
Halterung Motor		*13, *14	Motoren Halterung	Halterung Motor	2
C1608C0G1H103J080AA	10nF, TDK - C1608C0G1H103J080AA - KONDENSATOR, 0603, C0G/NPO, 50V	C1	CAP-0603[1608] - RFL	PassCap-00046-A.2	1
GRM188R71E104KA01D	100nF 25volts X7R 10% SMD/SMT 0603 - Multilayer Ceramic Capacitors MLCC	C2	CAP-0603[1608] - RFL	PassCap-00038-A.4	1
C1608X5R1A106M	10uF, TDK - C1608X5R1A106M - CAPACITOR , 10V, X5R, 20%, 0603	C3, C4	CAP-0603[1608] - RFL	PassCap-00002-A.7	2
180uF 16V	25SVPF180M	C5	Cap_180uF_16V	C,180uF	1
VJ0603V104ZXAPW1BC	100nF, Kondensator aus mehreren Keramikschichten MLCC - SMD/SMT 0603 50volts Y5V +80-20%	C6, C7, C8, C9, C10	CAP-0603[1608] - RFL	PassCap-00066-A.1	5
CPol	EMVA160ADA221MF80 G	C11	ALU-Elko 6.3x5.5	CPol	1
2A	B220A-13-A	D1	S-Diode	S_Diode	1
6.2uH 16.5mR	SRU1038-6R2Y	L1	Spule	Spule	1
Motor_A	Header, 5-Pin, Dual row	P1	Wannenstecker 2x5 - H	Header 2x5	1
Motor_B	Header, 5-Pin, Dual row	P2	Wannenstecker 2x5 - H	Header 2x5	1
TNPW06036K19BEEA	6.19k, 0603, Dünnschichtwiderstände - SMD	R1, R2, R3, R5	RES-0603[1608] - RFL	PassResSMD-00004-A.3	4
ERA3AEB362V	3.6k, PANASONIC - ERA3AEB362V - WIDERSTAND, 3.6k, 0603, 0.1%, 0.1W	R4	RES-0603[1608] - RFL	PassResSMD-00025-A.5	1
ERJ-3GEY0R00V	0R SMD 0603 - Thick Film Resistors	R6, R7, R8, R9, R10, R11, R12, R13	RES-0603[1608] - RFL	PassResSMD-00014-A.2	8
LM2700MT		U1	LM2700	LM2700	1
DRV8841PWPR	DUAL H-BRIDGE DRIVER	U2	TI_HTSSOP(PWP)-(R-PDSC	MOTOR--00001-A.3	1