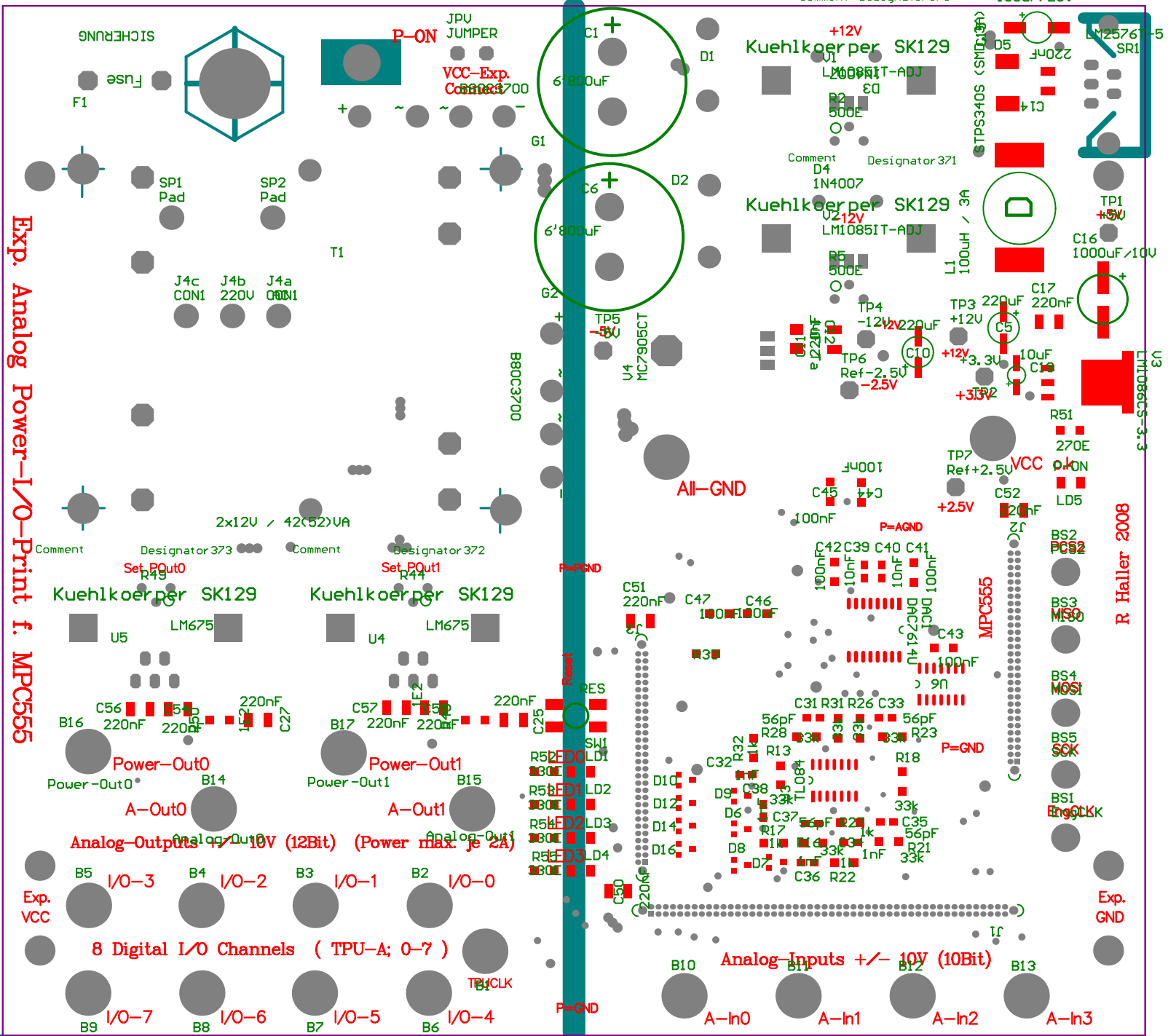


7165.354 (mil)

Exp. Analog Power-I/O-Print f. MPC555



7913.386 (mil)

R Haller 2008

Exp. GND

S-Diode 5A / 0.5V Comment Designator370

100uF/25V

Kuehlkoerper SK129

Kuehlkoerper SK129

MPC555

All-GND

P=GND

Analog-Inputs +/- 10V (10Bit)

Analog-Outputs +/- 10V (12Bit) (Power max. je 2A)

8 Digital I/O Channels (TPU-A; 0-7)

Power-Out0

Power-Out1

A-Out0

A-Out1

Exp. VCC

Exp. GND

P-GND

A-In0

A-In1

A-In2

A-In3

I/O-3

I/O-2

I/O-1

I/O-0

I/O-7

I/O-6

I/O-5

I/O-4

TP1 CLK

Eng CLK

BS1 MOSI

BS2 MISO

BS3 CS

BS4 SCK

BS5 SCL

BS6 SDA

BS7 SDC

BS8 SDC

BS9 SDC

BS10 SDC

BS11 SDC

BS12 SDC

BS13 SDC

BS14 SDC

BS15 SDC

BS16 SDC

BS17 SDC

BS18 SDC

BS19 SDC

BS20 SDC

BS21 SDC

BS22 SDC

BS23 SDC

BS24 SDC

BS25 SDC

BS26 SDC

BS27 SDC

BS28 SDC

BS29 SDC

BS30 SDC

BS31 SDC

BS32 SDC

BS33 SDC

BS34 SDC

BS35 SDC

BS36 SDC

BS37 SDC

BS38 SDC

BS39 SDC

BS40 SDC

BS41 SDC

BS42 SDC

BS43 SDC

BS44 SDC

BS45 SDC

BS46 SDC

BS47 SDC

BS48 SDC

BS49 SDC

BS50 SDC

BS51 SDC

BS52 SDC

BS53 SDC

BS54 SDC

BS55 SDC

BS56 SDC

BS57 SDC

BS58 SDC

BS59 SDC

BS60 SDC

BS61 SDC

BS62 SDC

BS63 SDC

BS64 SDC

BS65 SDC

BS66 SDC

BS67 SDC

BS68 SDC

BS69 SDC

BS70 SDC

BS71 SDC

BS72 SDC

BS73 SDC

BS74 SDC

BS75 SDC

BS76 SDC

BS77 SDC

BS78 SDC

BS79 SDC

BS80 SDC

BS81 SDC

BS82 SDC

BS83 SDC

BS84 SDC

BS85 SDC

BS86 SDC

BS87 SDC

BS88 SDC

BS89 SDC

BS90 SDC

BS91 SDC

BS92 SDC

BS93 SDC

BS94 SDC

BS95 SDC

BS96 SDC

BS97 SDC

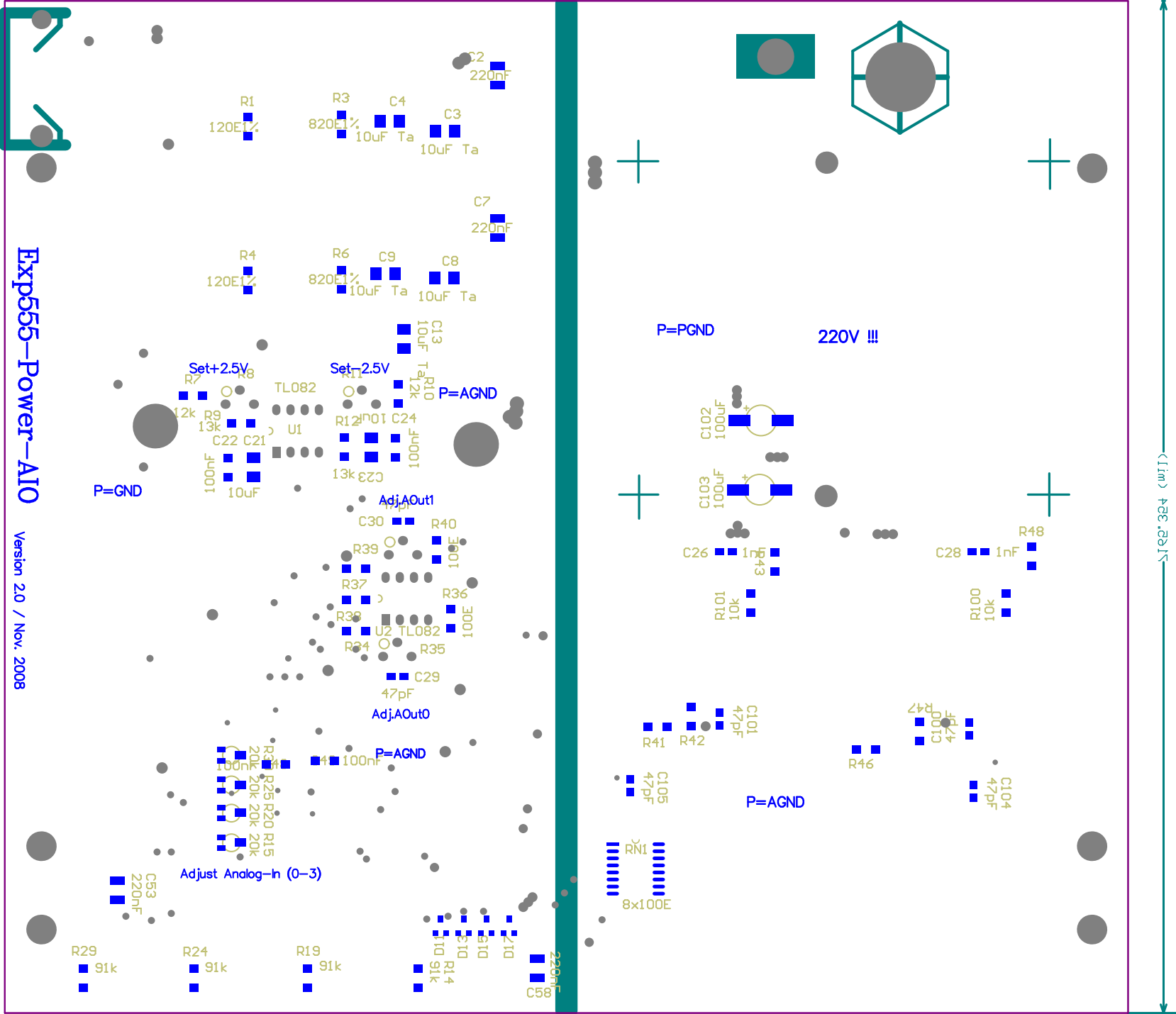
BS98 SDC

BS99 SDC

BS100 SDC

Exp555-Power-A10

Version 2.0 / Nov. 2008



383.3811

483.3811