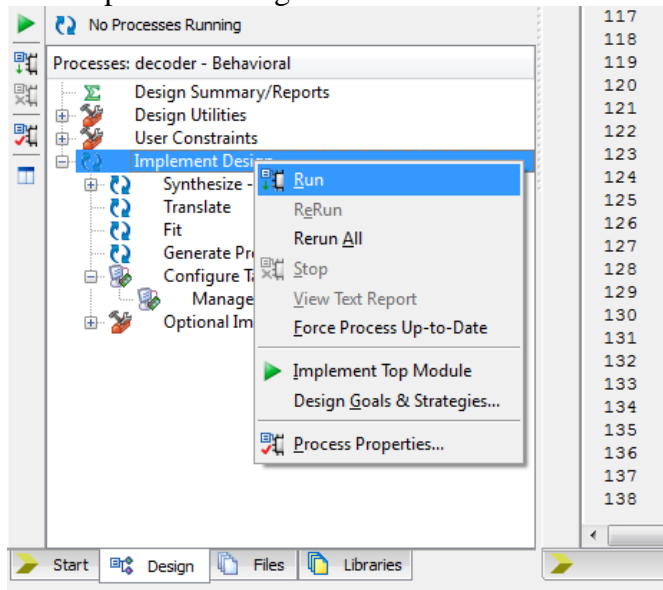
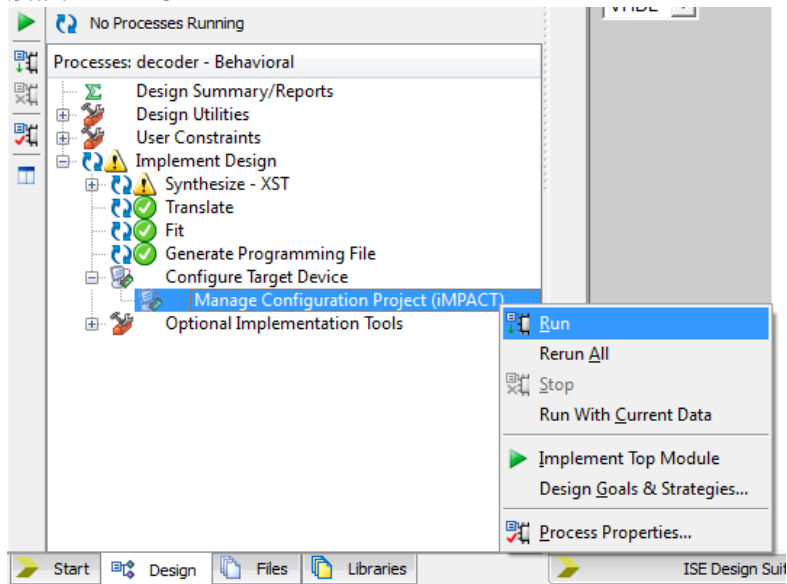


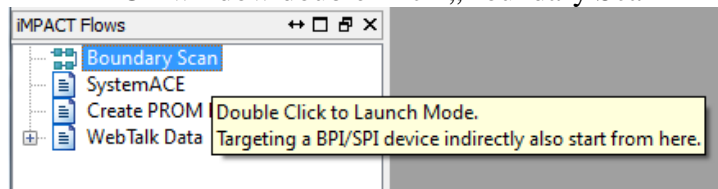
1. Run Implement Design



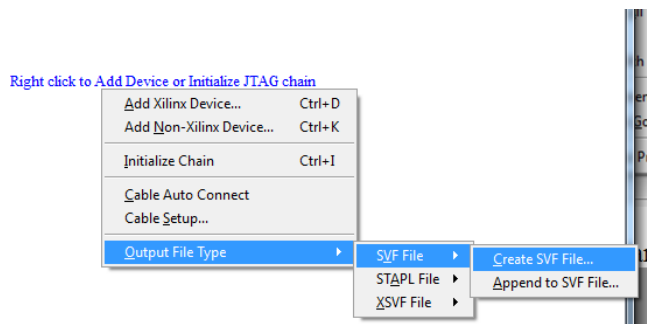
2. Start iMPACT



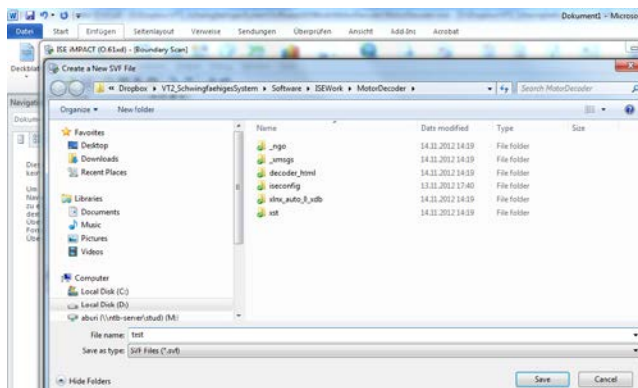
3. In iMPACT window double click „Boundary Scan“



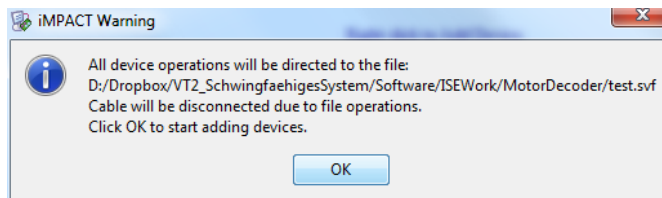
4. Right click on main frame and navigate to “create SVF file”



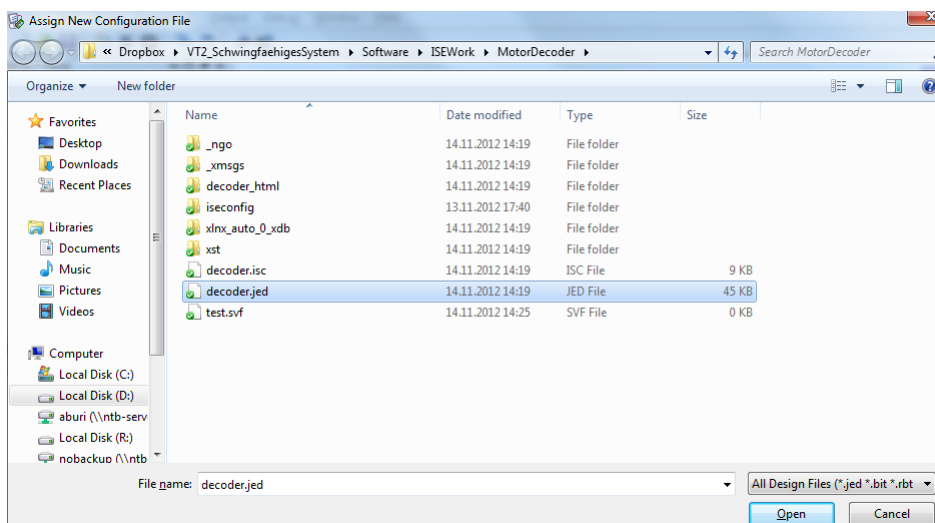
5. Enter file name, for example “test” and click save



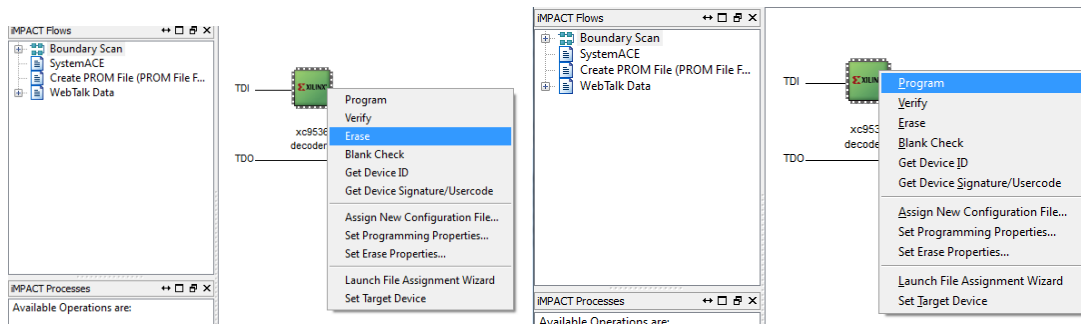
6. Click OK on the upcoming window



7. Select the *.jed file of your main project and click open

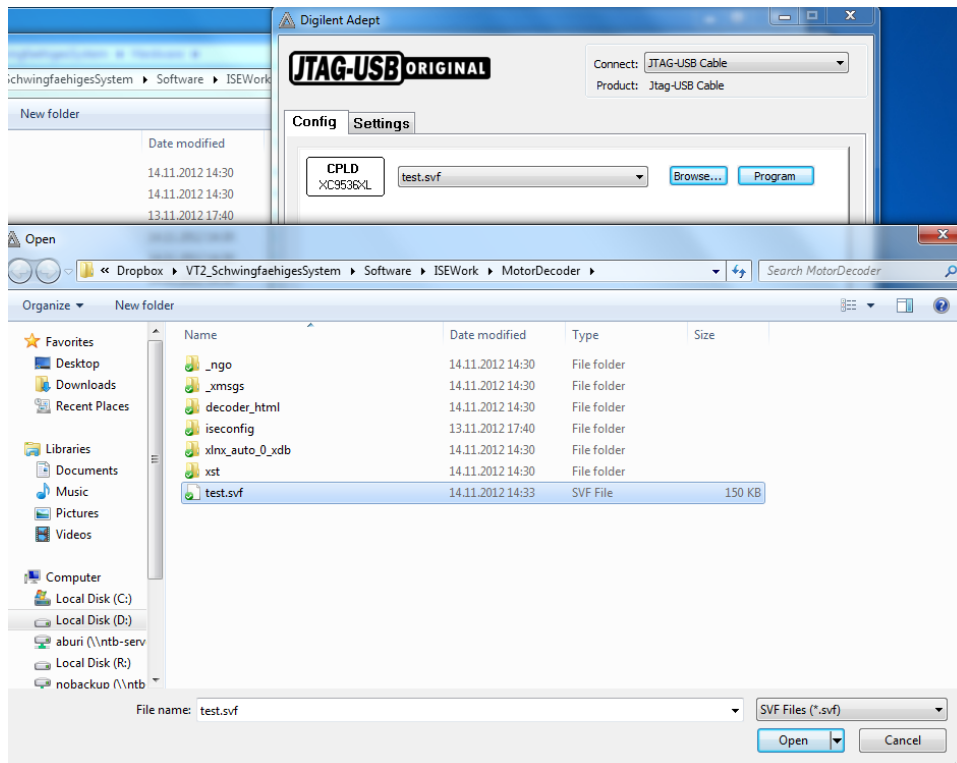


8. Erase and program target device



9. Close iMPACT window (save or not)

10. Click on browse next to the device in the Digilent Adept Window and select the created test.svf file



11. Click on Program