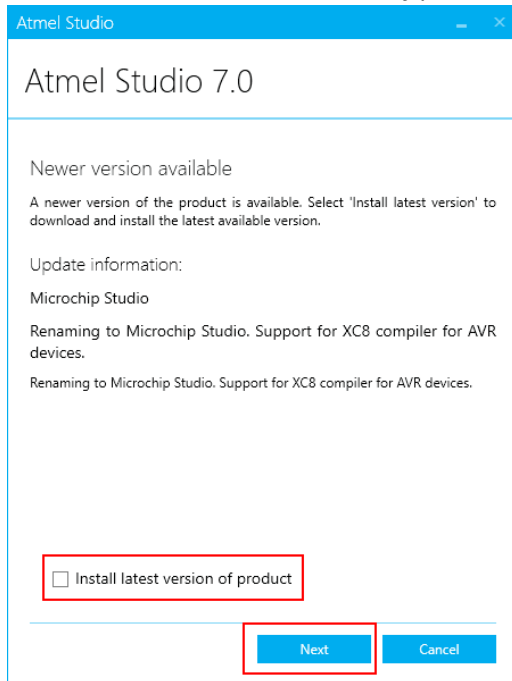


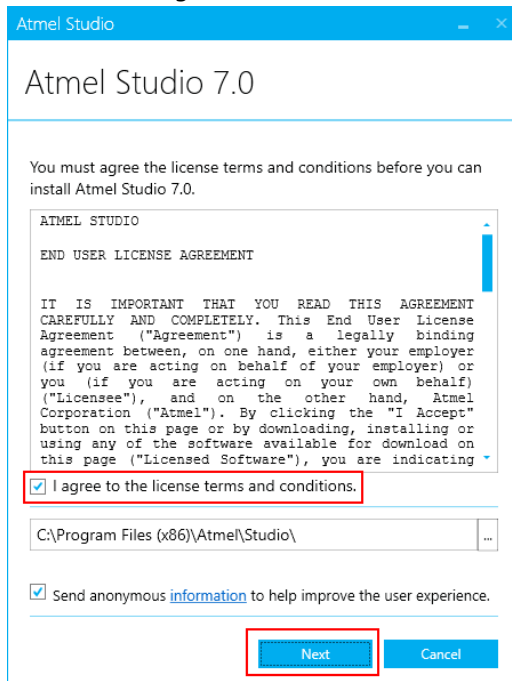
## Atmel Studio 7 – Grundinstallation

1. *Atmel Studio 7* aus dem *Microchip* Download-Archiv herunterladen (ca. 900MB):  
<http://studio.download.atmel.com/7.0.2389/as-installer-7.0.2389-full.exe>
2. Installer mit erhöhten Berechtigungen ausführen, danach:
  - Checkbox *Install latest version of product* **deaktivieren**:



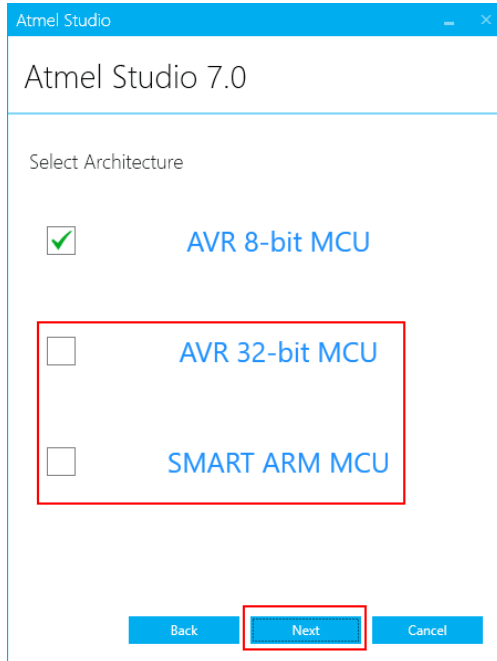
- **Next**

3.
  - Checkbox *I agree to the license terms and conditions* aktivieren:



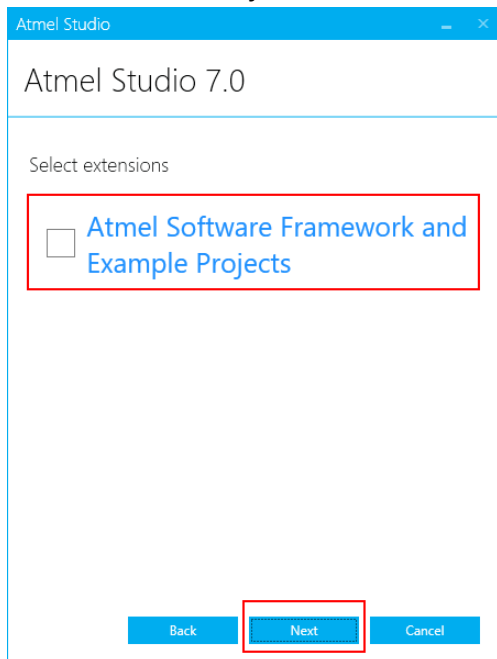
- **Next**

4. ▪ Checkboxes *AVR 32-bit MCU* und *SMART ARM MCU* deaktivieren:



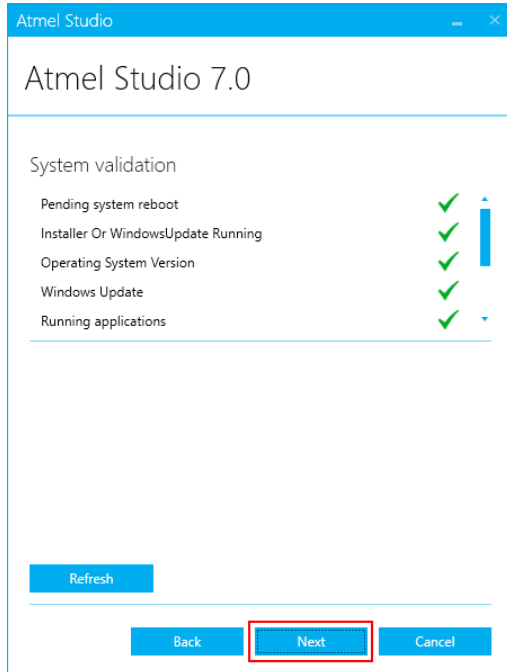
- *Next*

5. ▪ Checkbox *Atmel Software Framework and Example Projects* deaktivieren:



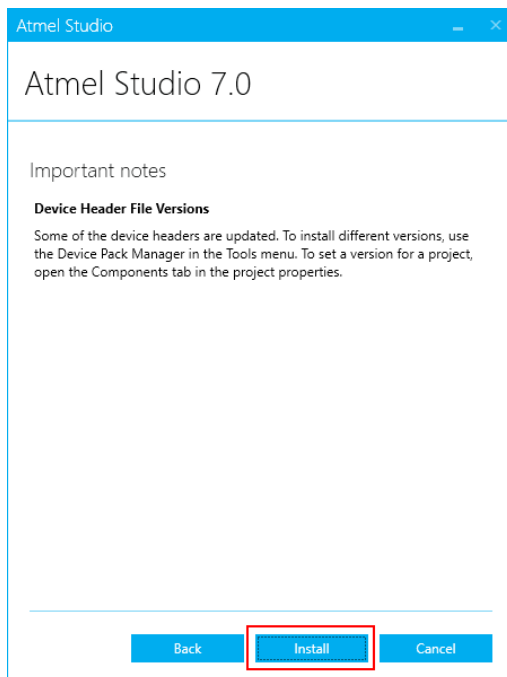
- *Next*

6.



▪ *Next*

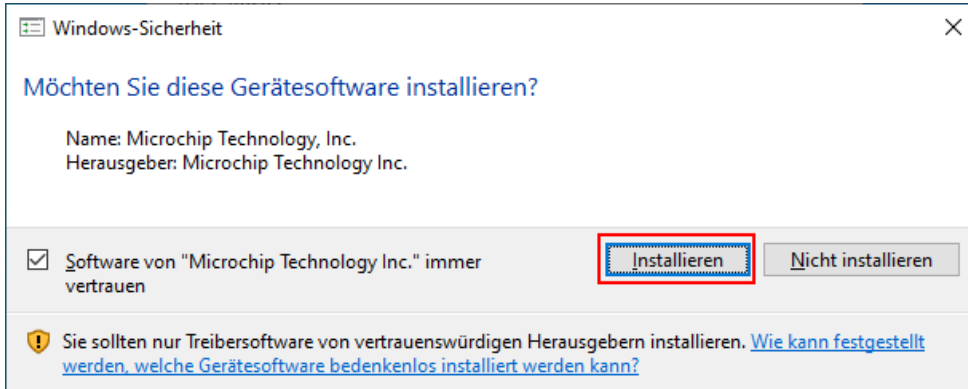
7.



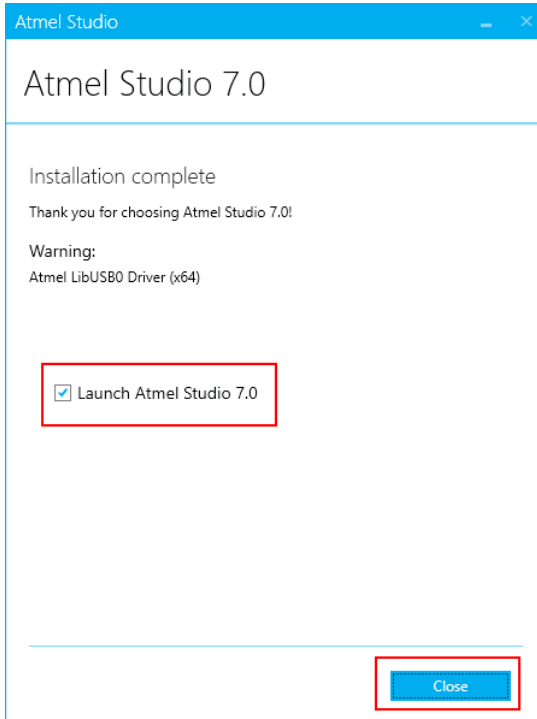
▪ *Install*

(Die unmittelbar darauffolgende Windows-Installationsabfrage mit *Ja/Yes* bestätigen.)

8. Alle folgenden Abfragen für die Gerätetreiberinstallationen mit *Installieren* bestätigen:



9. Checkbox *Launch Atmel Studio 7.0* aktivieren



- *Close*

**Ende der Atmel Studio 7 Grundinstallation.**